

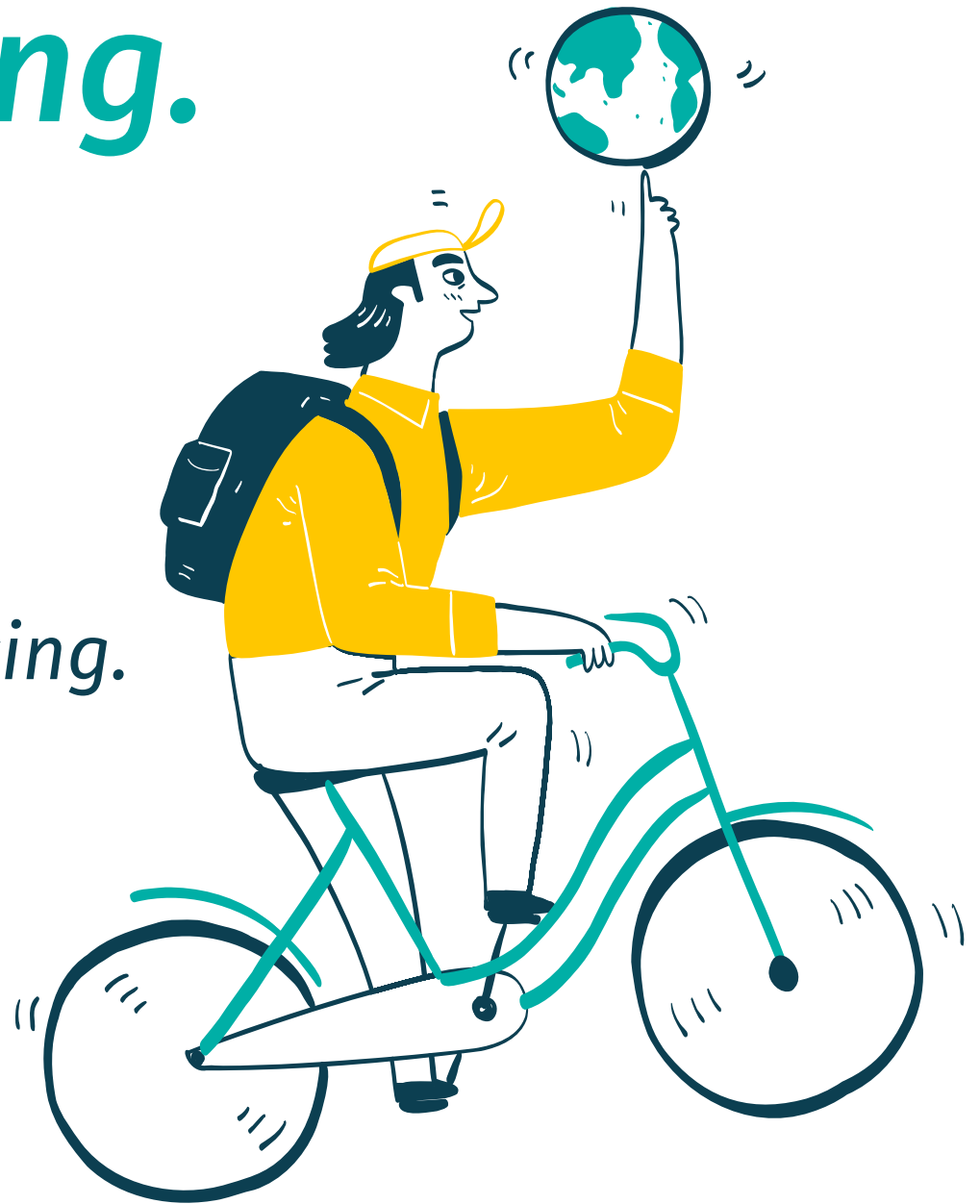


***We are **LivLong**.***  
***We are all set***  
***to make***  
***India***  
***live long.***



# *A legacy destined to live long.*

*LivLong thrives on  
the back of IIFL's  
16-year-old  
legacy in  
Healthcare Financing.*

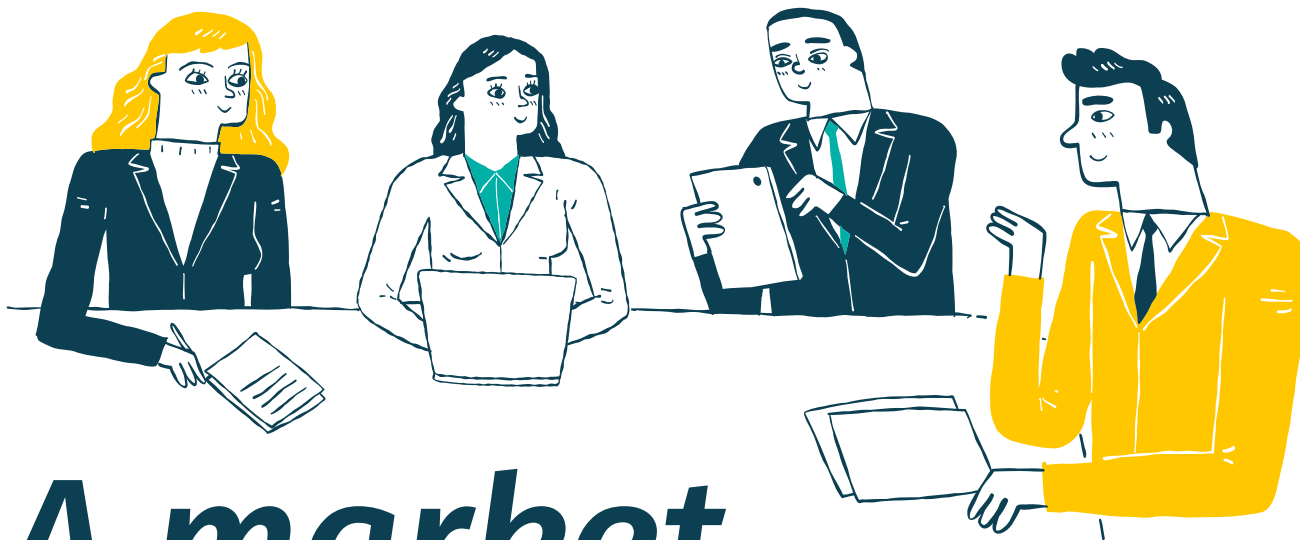


# *The **birth** of LivLong.*

*While assisting in settling claims in India through LivLong Insurance, we realized most of the expenses include OPD costs that are never insured.*

*LivLong Wellness was born to bridge this gap.*





# *A market ripe for disruption.*

*Successfully selling over 5 lacs health and varied insurance products, we continue to target the tech-savvy generation for transforming healthcare services in India.*

# ***LivLong's offerings***

## ***Health plans***

*Comprehensive OPD packages with complimentary IPD*

## ***Lab tests***

*Pan-India lab partners*

## ***Doctor consultation***

*Experienced in-house doctors*

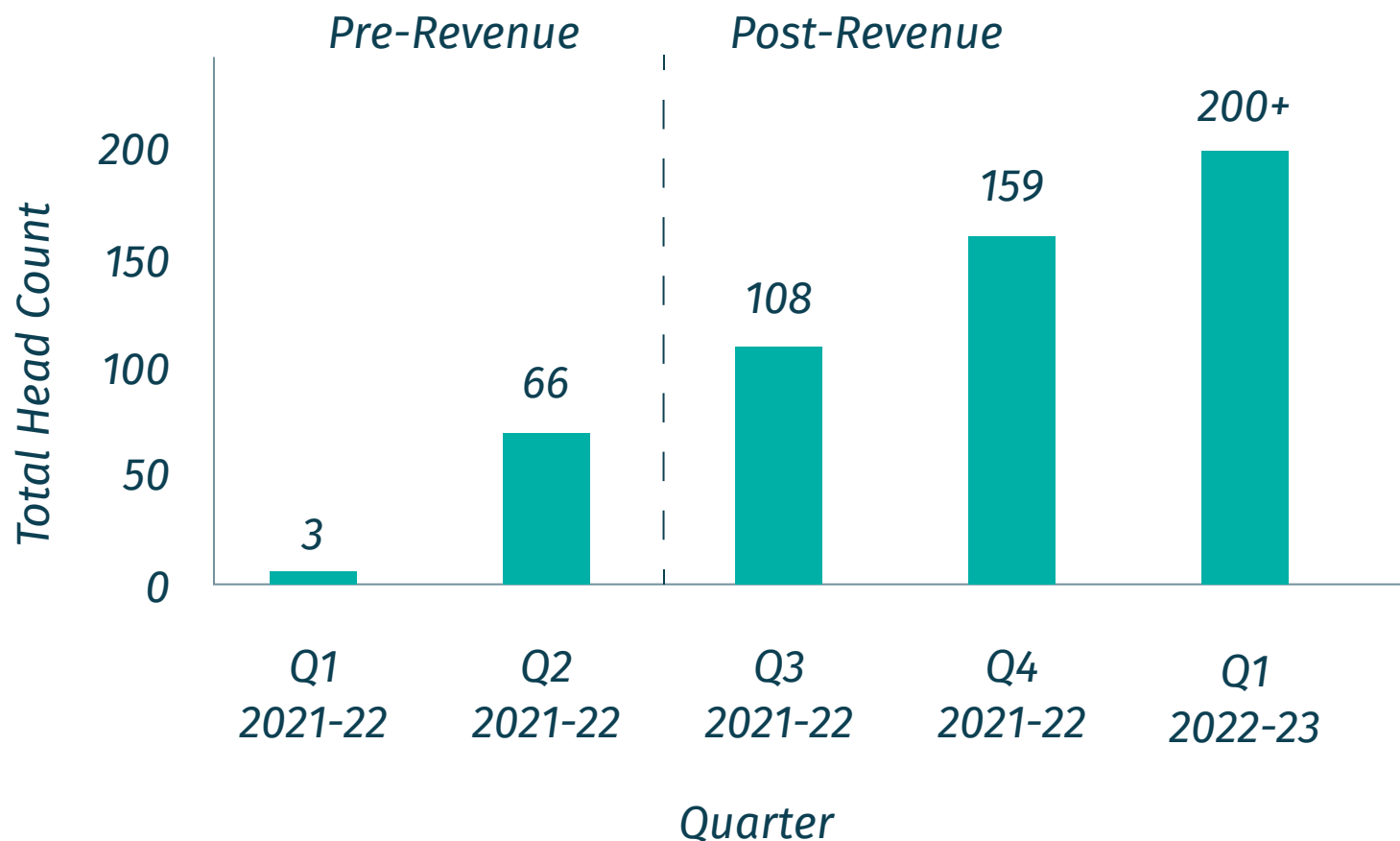
## ***Health Insurance***

*Complete Health Cover at affordable premiums*



# *We got stronger to make India **healthier**.*

*Starting with 3 employees in the pre-revenue phase to make it a huge family of 200+ in the post-revenue phase, we've come a long way.*



# *Claiming the number game*

**Total Claims Settled**  
(Oct '21 to March '22)

**Settled  
96.5%\***

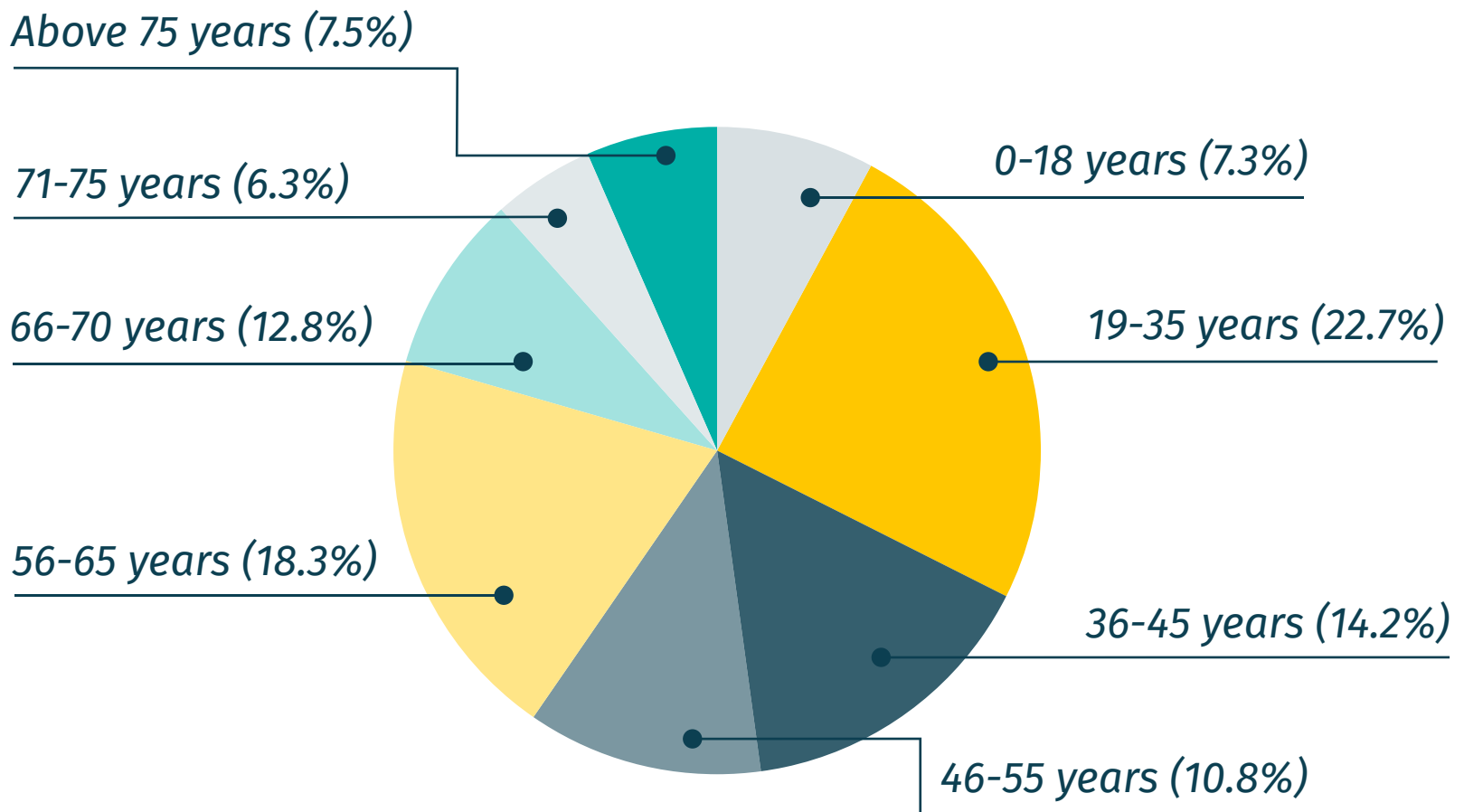
Cashless + Reimbursement



*\*Includes Open Claims Requests.*

# *Covering young guns and old gems*

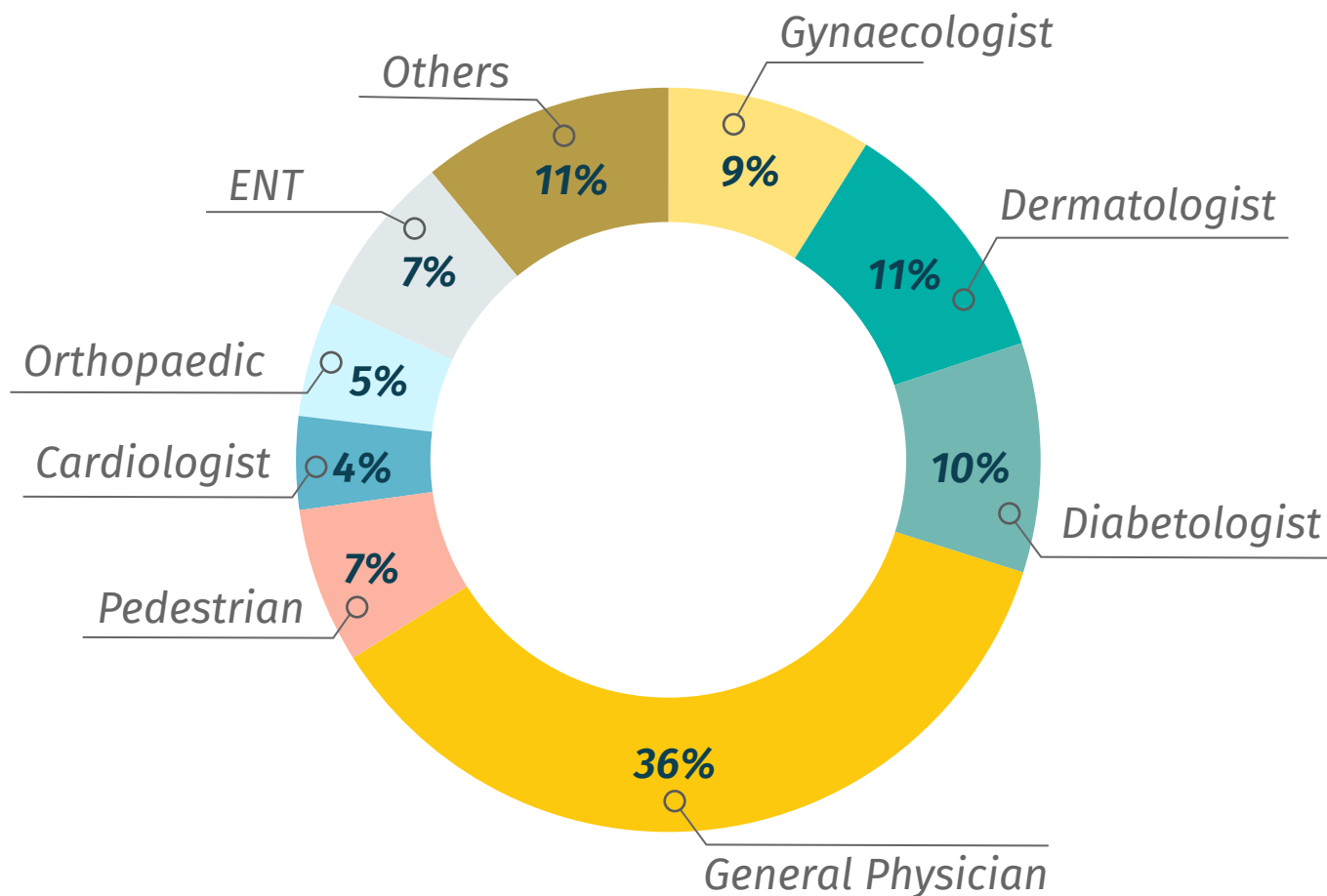
*Claims settled Data*





# *Consultations provided across specialties*

*till March of 2022..*



# *Sky isn't the limit.*

Keeping convenience,  
affordability, and accessibility  
as core values, we've already  
touched **4,10,000** lives in  
FY 2021-22, and we aim to protect  
**5 million** lives by the end of **2025**.



# *The purpose lives on...*



*Our passion to build a **healthier** India drives us to keep working on several healthcare assistance projects, including Health Risk Assessment, OPD/IPD care, and claims assistance.*



# *Better services for a better life.*

*We aspire to deliver personalized customer experience for all preventive & curative healthcare treatments.*



IIFL House, Sun Infotech Park, Road No. 16V, Plot No. B-23, MIDC, Thane Industrial Area, Wagle Estate, Thane - 400 604. | [www.livlong.com](http://www.livlong.com)