



LIVHEALTHY FAMILY SMART PACKAGE

COMPREHENSIVE COVER FOR YOU & YOUR FAMILY

Livlong³⁶⁵

 www.livlong.com

PACKAGE INCLUSIONS

For a family of 4 (0 to 55 years)



Teleconsultations

- General Physician – Unlimited
- Specialists – 8

Annual Health Check

- Pro Health Panel (33 parameters) – 4

OPD Benefits*

- GP/Specialist Reimbursement /Dentist – ₹7,000
- Medicine Wallet – ₹5,000
- Lab Wallet – ₹10,000
- Home Care Wallet – ₹10,000

*Per transaction, benefit can be availed upto ₹750

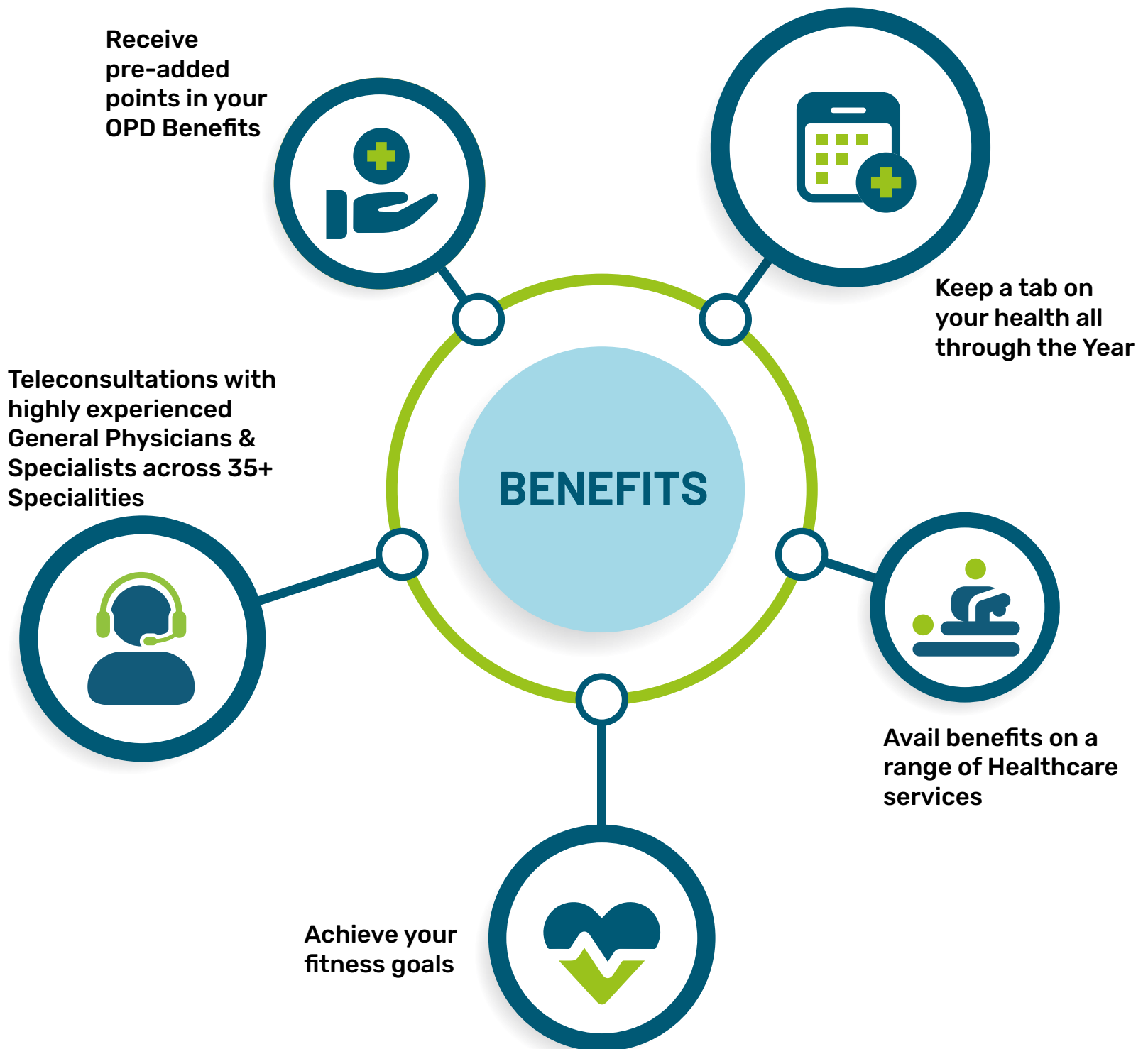
Emergency Services

- Ambulance Services – 4

Discount Benefits

- Medicine Discount – upto 20%
- Advance Diagnostic (MRI, CT Scan, Ultra Sound and Pet Scan) – upto 20%
- Dental Discount based on the procedures – upto 20%
- Labs Discount – upto 50%
- General Physician Consultation – upto 30%
- Speciality Consultation – upto 30%

MULTIPLE BENEFITS OF LIVHEALTHY FAMILY SMART PACKAGE



Why Choose Livlong 365



6,000+
Doctors



3.3Mn+ Doctor
Consultations
Sold



2Mn+ Active
Customers



35+ Speciality &
Super Speciality
Doctors



16+ Language
Options for
Consultation



32+ NABL
Accredited Lab
Partners



800+ Cities
Reached



19,000+
Pincodes
Covered

Get Comprehensive Care for You and Your Family!
Purchase LivHealthy Family Smart Package - Today!

FOR AVAILMENT & SERVICE QUERIES, CALL ON

TOLL FREE 1800 2020 600

To avail services & to get
interesting offers, download
Livlong 365 App from Google
Play Store OR Scan the QR Code



Livlong³⁶⁵

Livlong Protection & Wellness Solutions Limited,
IIFL House, Sun Infotech Park, Plot No. B-23, Road No. 16V, MIDC, Thane
Industrial Area, Wagle Estate, Thane, Maharashtra - 400604 | www.livlong.com